

Troop Committee Chair (CC)

Scoutmaster (SM)

Chartered Organization Representative (COR)

Assistant Scoutmaster (SA)

Junior Assistant Scoutmaster (JASM)

Senior Patrol Leader (SPL)

★ = Appointed by the Senior Patrol Leader

Assistant Senior Patrol Leader (ASPL) #1 ★

Assistant Senior Patrol Leader (ASPL) #2 ★

Troop Instructor (TI) ★

Scribe (SC)

Patrol Leader (PL) #1

Troop Guide (TG) ★

Quartermaster (QM)

Patrol Leader (PL) #2

Den Chief (DC) ★

Librarian (LB)

Patrol Leader (PL) #3

Order of the Arrow Representative (OA) ★

Historian (HS)

Patrol Leader (PL) #4

Outdoor Ethics Guide (OG) ★

Chaplain Aide (CA)

Webmaster (WM)

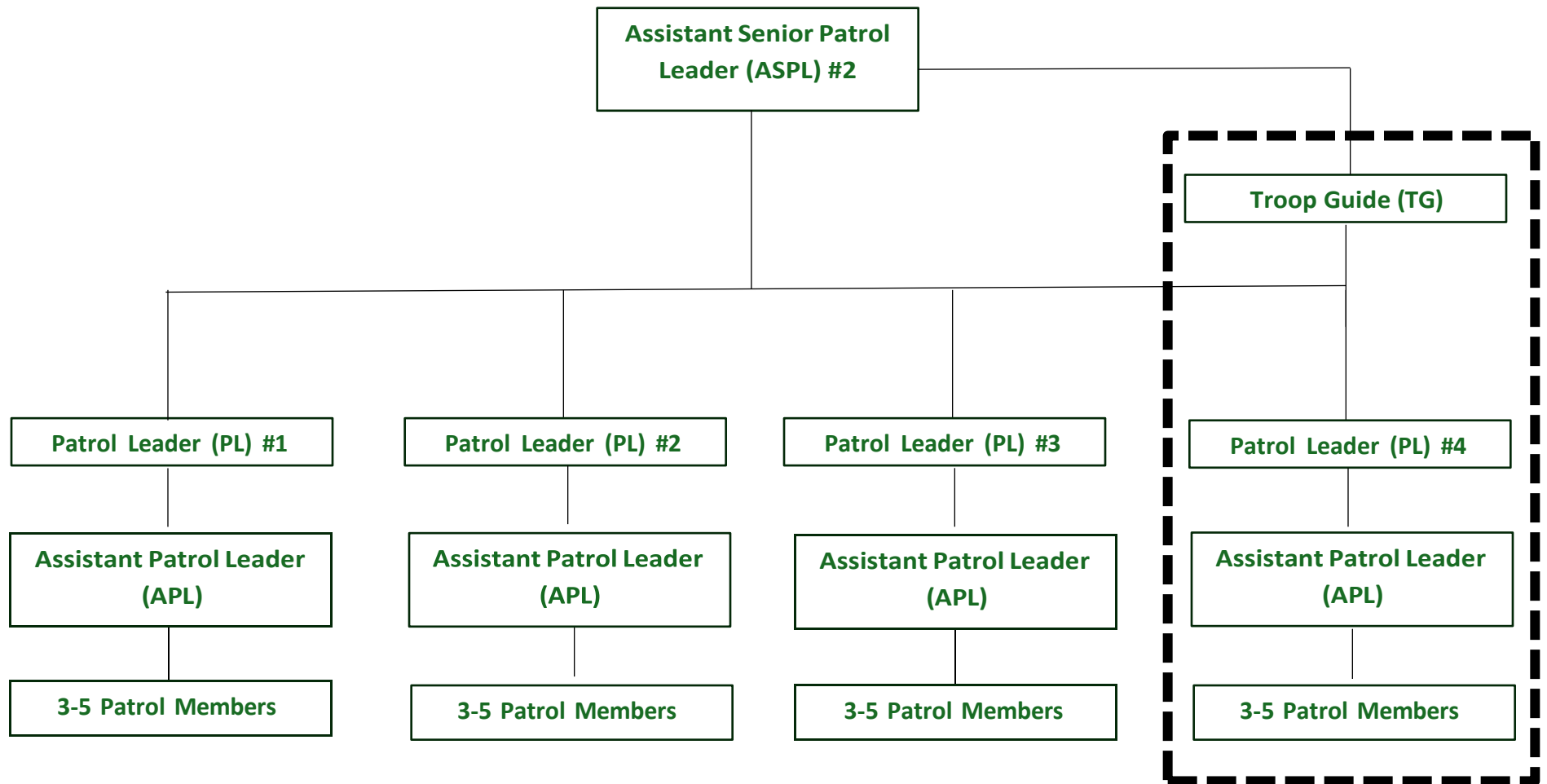
Bugler (BR)

— = Patrol Leaders' Council (PLC)

■ = Adult Position

□ = Youth Position

[] = "Key 3"



= New Scout Patrol

If a Patrol Leader (PL) is unavailable for general/PLC meetings, then the Assistant Patrol Leader (APL) takes their place