

Troop Committee Chair (CC)

Scoutmaster (SM)

Chartered Organization Representative (CR)

Assistant Scoutmaster (SA)

Junior Assistant Scoutmaster (JAM)

Senior Patrol Leader (SPL)

★ = Appointed by the Senior Patrol Leader

- Troop Instructor (TI) ★
- Troop Guide (TG) ★
- Den Chief (DC) ★
- Order of the Arrow Representative (OA) ★
- Outdoor Ethics Guide (OG) ★

- Assistant Senior Patrol Leader (ASPL) #1 ★
- Scribe (SC)
- Quartermaster (QM)
- Librarian (LB)
- Historian (HS)
- Chaplain Aide (CA)
- Webmaster (WM)
- Bugler (CA)

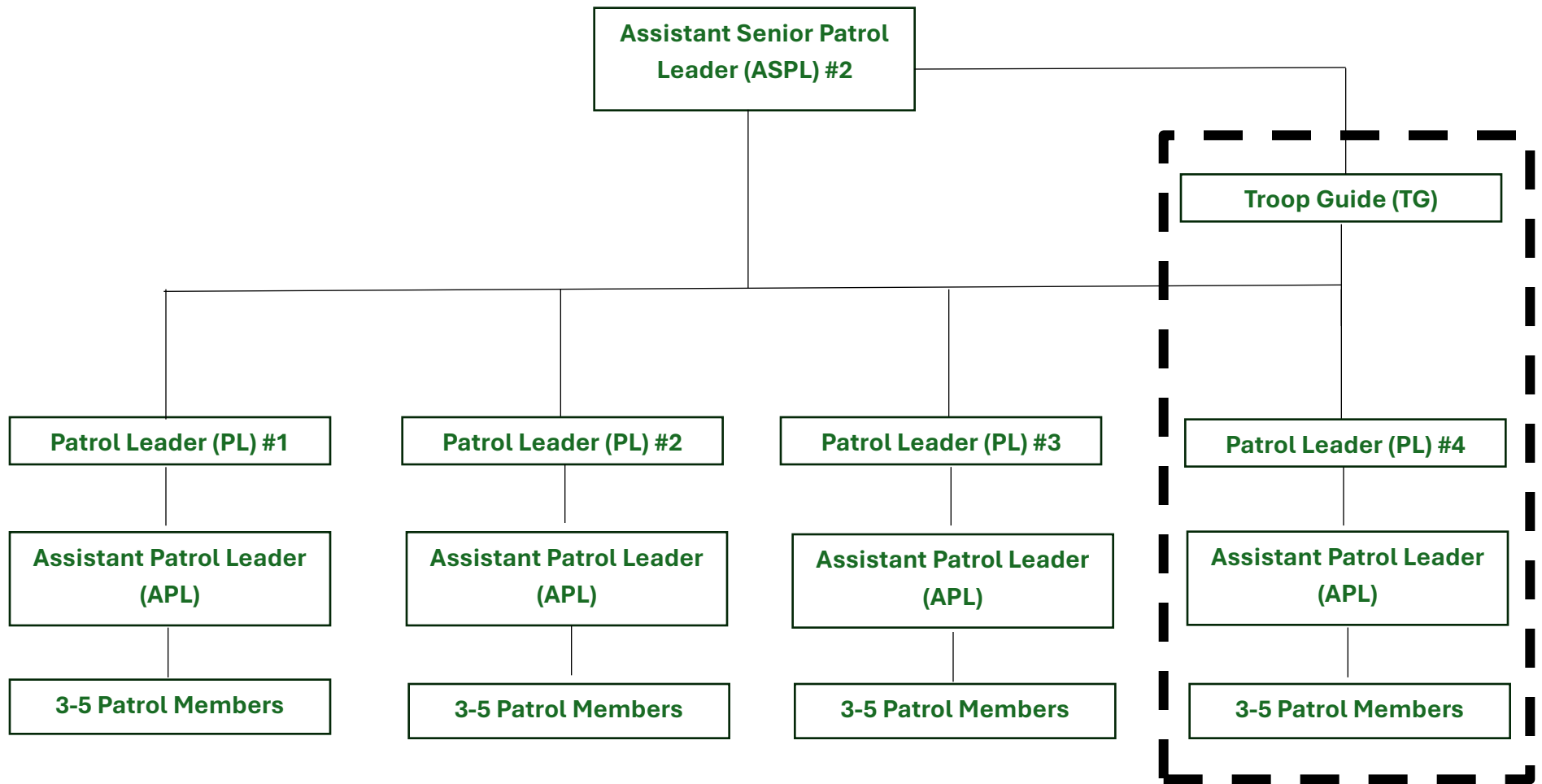
- Assistant Senior Patrol Leader (ASPL) #2 ★
- Patrol Leader (PL) #1
- Patrol Leader (PL) #2
- Patrol Leader (PL) #3
- Patrol Leader (PL) #4

———— = Patrol Leaders' Council (PLC)

■ = Adult Position

□ = Youth Position

- - - = "Key 3"



= New Scout Patrol

If a Patrol Leader (PL) is unavailable for general/PLC meetings, then the Assistant Patrol Leader (APL) takes their place